

Department of Defense

**WORLDWIDE U.S. ACTIVE DUTY MILITARY
PERSONNEL CASUALTIES**

October 1979 through December 1997

(Please See Note on Following Page)

*Prepared by
Department of Defense
Washington Headquarters Services
Directorate for Information
Operations and Reports*

- - - - - NOTE - - - - -

This publication is designed to be used as a planning document and is not a record of day-to-day casualty counts. Since there is a lead time for casualty information to be reported by field activities to the Military Service casualty offices and then to the Office of the Secretary of Defense, the data cannot be used for publication or release as current data. It is imperative that the detailed information and the resulting casualty statistics be treated with the utmost sensitivity.

Since all casualty data, including any changes or modifications, are as reported to the Office of the Secretary of Defense by the respective Military Service casualty offices, inquiries regarding individual casualties or other proposed changes to the data in this publication should be directed to the appropriate Military Service casualty offices:

Department of the Army

U.S. Army Military Personnel Center
ATTN: TAPC-PE-SI
2461 Eisenhower Avenue, Room 912
Alexandria, VA 22331-0483

Department of the Navy

Bureau of Naval Personnel
ATTN: Pers-62, Room 1712
Washington, DC 20370-5663

Department of the Air Force

Headquarters Air Force Military Personnel Center
ATTN: DPMC
Randolph Air Force Base, TX 78150-6001

Commandant of the Marine Corps

Code MHP-10
Washington, DC 20380-0001

FOREWORD

This publication provides data on worldwide active duty military personnel casualties as reported during the period October 1979 through December 1997. It is intended to provide summary information for the Office of the Secretary of Defense and various other Department of Defense (DoD) and Federal Government offices. A related list which contains additional detailed data on Military Service, name, pay grade, date of death, and home of record for all active duty military personnel who have died since October 1, 1979, is compiled annually. This list, entitled ***Worldwide U.S. Active Duty Military Deaths, Alphabetical Index by Name*** (ST33), is available from the following sources:

For the public

Director
National Technical Information Service
5285 Port Royal Road
Springfield, VA 22161 Phone: (703) 487-4650

For the Federal Government and its contractors

Administrator
Defense Technical Information Center (BR)
8725 John J. Kingman Road, Suite 0944
Ft. Belvoir, VA 22060-6218 Phone: (703) 767-8274

The information has been generated from an automated data base of casualty information, certified and reported monthly by the Military Services. Hence, responsibility for the accuracy of these data is that of each of the reporting Military Services. The reports presented in this publication are based on the reporting requirements set forth in DoD Instruction 1300.18, ***Military Personnel Casualty Matters, Policies, and Procedures***, dated December 27, 1991. This publication includes only those personnel casualties reported by date of publication. Subsequent casualty reports will be included in future publications with appropriate adjustments.

INTERNET AVAILABILITY. This publication is no longer available in a bound, printed edition. It can be obtained through the Internet either by accessing DefenseLINK or directly through the DIOR World Wide Web site (<http://web1.whs.osd.mil/mmid/mmidhome.htm>).

TABLE OF CONTENTS

TABLE/FIG.	WORLDWIDE U.S. ACTIVE DUTY MILITARY DEATHS/CASUALTIES SINCE OCTOBER 1, 1979	PAGE
TABLES 1-1D	Comparison of Military Personnel Strength and Manner of Death - Total (by Military Service/Fiscal Year)	5
FIGURE 1	Comparison of Military Personnel Strength and Deaths (by Fiscal Year).....	10
TABLE 2	By Casualty Group and Military Service - October 1979 through December 1997.....	11
FIGURE 2	Nonhostile Deaths by Manner Per 100,000 Strength (by Fiscal Year).....	12
TABLE 3	By Casualty Type and Military Service - October 1997 through December 1997.....	13
TABLE 4	By Home State of Record and Military Service - October 1979 through December 1997.....	14
TABLE 5	By Pay Grade and Race - October 1979 through December 1997.....	17
TABLE 6	By Pay Grade and Military Service - October 1979 through December 1997.....	18
TABLE 7	By Attained Age and Military Service - October 1979 through December 1997.....	19
TABLE 8	By Place of Casualty and Military Service - October 1979 through December 1997.....	21
TABLE 9	By Place of Casualty and Casualty Group - October 1979 through December 1997.....	27
TABLES 10-10D	Comparison of Military Personnel Strength and Manner of Death - Males (by Military Service/Fiscal Year)	33
TABLES 11-11D	Comparison of Military Personnel Strength and Manner of Death - Females (by Military Service/Fiscal Year)	38
TABLE 12	Deaths Resulting from Hostile Action (by Fiscal Year).....	43
TABLE 13	Selected Military Operations.....	44
GLOSSARY OF TERMS		45

TABLE 1
WORLDWIDE U. S. ACTIVE DUTY MILITARY DEATHS
Comparison of Military Personnel Strength and Manner of Death

TOTAL

Fiscal Year	(Sep. 30) End Strength	Total Deaths	Accident	Illness	Homicide	Self- Inflicted	Pending/ Undeter- mined	Hostile Deaths	Deaths per 100,000	Nonhostile Deaths per 100,000	Accidents per 100,000	Illnesses per 100,000	Homicides per 100,000	Self- Inflicted per 100,000
1980	2,050,627	2,391	1,577	401	161	236	15	1	116.6	116.5	76.9	19.6	7.9	11.5
1981	2,082,560	2,421	1,536	473	160	242	10	0	116.3	116.3	73.8	22.7	7.7	11.6
1982	2,108,612	2,311	1,500	437	113	243	18	0	109.6	109.6	71.1	20.7	5.4	11.5
1983	2,123,349	2,202	1,409	413	114	235	25	6	103.7	103.4	66.4	19.5	5.4	11.1
1984	2,138,157	2,313	1,335	379	94	215	14	276	108.2	95.3	62.4	17.7	4.4	10.1
1985	2,151,032	2,016	1,215	400	97	273	26	5	93.7	93.5	56.5	18.6	4.5	12.7
1986	2,169,112	2,241	1,473	359	114	262	31	2	103.3	103.2	67.9	16.6	5.3	12.1
1987	2,174,217	1,991	1,171	397	97	263	25	38	91.6	89.8	53.9	18.3	4.5	12.1
1988	2,138,213	1,845	1,104	324	99	291	24	3	86.3	86.1	51.6	15.2	4.6	13.6
1989	2,130,229	1,679	1,057	302	59	221	40	0	78.8	78.8	49.6	14.2	2.8	10.4
1990	2,043,705	1,526	864	275	71	250	42	24	74.7	73.5	42.3	13.5	3.5	12.2
1991	1,985,555	1,787	931	323	108	232	45	148	90.0	82.5	46.9	16.3	5.4	11.7
1992	1,807,177	1,332	712	253	112	220	34	1	73.7	73.7	39.4	14.0	6.2	12.2
1993	1,705,103	1,245	669	214	88	241	23	10	73.0	72.4	39.2	12.6	5.2	14.1
1994	1,610,490	1,109	548	216	86	230	10	19	68.9	67.7	34.0	13.4	5.3	14.3
1995	1,518,224	1,055	572	167	59	242	9	6	69.5	69.1	37.7	11.0	3.9	15.9
1996	1,471,722	1,007	518	177	65	209	17	21	68.4	67.0	35.2	12.0	4.4	14.2
1997	1,438,562	862	459	172	42	157	32	0	59.9	59.9	31.9	12.0	2.9	10.9
Total		31,333	18,650	5,682	1,739	4,262	440	560						

*Prepared by: Washington Headquarters Services
 Directorate for Information
 Operations and Reports
 Updated: March 26, 1998*

TABLE 1A
WORLDWIDE U. S. ACTIVE DUTY MILITARY DEATHS
Comparison of Military Personnel Strength and Manner of Death

ARMY

Fiscal Year	(Sep. 30) End Strength	Total Deaths	Accident	Illness	Homicide	Self- Inflicted	Pending/ Undeter- mined	Hostile Deaths	Deaths per 100,000	Nonhostile Deaths per 100,000	Accidents per 100,000	Illnesses per 100,000	Homicides per 100,000	Self- Inflicted per 100,000
1980	777,036	890	572	164	65	86	2	1	114.5	114.4	73.6	21.1	8.4	11.1
1981	781,419	946	569	207	79	89	2	0	121.1	121.1	72.8	26.5	10.1	11.4
1982	780,391	954	590	201	58	99	6	0	122.2	122.2	75.6	25.8	7.4	12.7
1983	779,643	831	518	174	57	79	3	0	106.6	106.6	66.4	22.3	7.3	10.1
1984	780,180	806	504	162	42	79	2	17	103.3	101.1	64.6	20.8	5.4	10.1
1985	780,787	824	483	163	52	123	3	0	105.5	105.5	61.9	20.9	6.7	15.8
1986	780,980	1,036	722	151	48	110	5	0	132.7	132.7	92.4	19.3	6.1	14.1
1987	780,815	764	465	162	52	82	2	1	97.8	97.7	59.6	20.7	6.7	10.5
1988	771,847	702	422	138	42	97	3	0	91.0	91.0	54.7	17.9	5.4	12.6
1989	769,741	597	375	107	23	76	16	0	77.6	77.6	48.7	13.9	3.0	9.9
1990	732,403	632	357	123	25	104	5	18	86.3	83.8	48.7	16.8	3.4	14.2
1991	710,821	761	369	151	40	97	6	98	107.1	93.3	51.9	21.2	5.6	13.6
1992	610,450	490	247	105	47	86	4	1	80.3	80.1	40.5	17.2	7.7	14.1
1993	572,423	468	246	83	44	84	3	8	81.8	80.4	43.0	14.5	7.7	14.7
1994	541,343	492	239	101	43	88	2	19	90.9	87.4	44.1	18.7	7.9	16.3
1995	508,559	385	203	88	20	71	1	2	75.7	75.3	39.9	17.3	3.9	14.0
1996	491,103	373	197	73	21	75	5	2	76.0	75.5	40.1	14.9	4.3	15.3
1997	491,707	292	140	78	19	49	6	0	59.4	59.4	28.5	15.9	3.9	10.0
Total		12,243	7,218	2,431	777	1,574	76	167						

*Prepared by: Washington Headquarters Services
 Directorate for Information
 Operations and Reports
 Updated: March 26, 1998*

TABLE 1B
WORLDWIDE U. S. ACTIVE DUTY MILITARY DEATHS
Comparison of Military Personnel Strength and Manner of Death

NAVY

Fiscal Year	(Sep. 30) End Strength	Total Deaths	Accident	Illness	Homicide	Self- Inflicted	Pending/ Undeter- mined	Hostile Deaths	Deaths per 100,000	Nonhostile Deaths per 100,000	Accidents per 100,000	Illnesses per 100,000	Homicides per 100,000	Self- Inflicted per 100,000
1980	527,153	693	477	102	43	61	10	0	131.5	131.5	90.5	19.3	8.2	11.6
1981	540,219	642	426	117	31	63	5	0	118.8	118.8	78.9	21.7	5.7	11.7
1982	552,996	563	385	90	22	56	10	0	101.8	101.8	69.6	16.3	4.0	10.1
1983	557,573	617	403	101	36	65	11	1	110.7	110.5	72.3	18.1	6.5	11.7
1984	564,638	583	362	106	23	59	8	25	103.3	98.8	64.1	18.8	4.1	10.4
1985	570,705	539	327	110	25	57	19	1	94.4	94.3	57.3	19.3	4.4	10.0
1986	581,119	544	339	92	27	67	19	0	93.6	93.6	58.3	15.8	4.6	11.5
1987	586,842	602	326	116	23	83	17	37	102.6	96.3	55.6	19.8	3.9	14.1
1988	592,570	560	348	93	28	71	17	3	94.5	94.0	58.7	15.7	4.7	12.0
1989	592,652	524	343	81	24	57	19	0	88.4	88.4	57.9	13.7	4.0	9.6
1990	579,417	430	243	73	23	55	32	4	74.2	73.5	41.9	12.6	4.0	9.5
1991	570,262	505	294	87	38	52	28	6	88.6	87.5	51.6	15.3	6.7	9.1
1992	541,883	415	223	73	39	60	20	0	76.6	76.6	41.2	13.5	7.2	11.1
1993	509,950	374	207	66	24	60	17	0	73.3	73.3	40.6	12.9	4.7	11.8
1994	468,662	274	136	52	22	59	5	0	58.5	58.5	29.0	11.1	4.7	12.6
1995	434,617	273	140	39	21	71	2	0	62.8	62.8	32.2	9.0	4.8	16.3
1996	416,735	247	125	49	22	43	8	0	59.3	59.3	30.0	11.8	5.3	10.3
1997	395,564	219	118	42	8	43	8	0	55.4	55.4	29.8	10.6	2.0	10.9
Total		8,604	5,222	1,489	479	1,082	255	77						

*Prepared by: Washington Headquarters Services
 Directorate for Information
 Operations and Reports
 Updated: March 26, 1998*

TABLE 1C
WORLDWIDE U. S. ACTIVE DUTY MILITARY DEATHS
Comparison of Military Personnel Strength and Manner of Death

AIR FORCE

Fiscal Year	(Sep. 30) End Strength	Total Deaths	Accident	Illness	Homicide	Self- Inflicted	Pending/ Undeter- mined	Hostile Deaths	Deaths per 100,000	Nonhostile Deaths per 100,000	Accidents per 100,000	Illnesses per 100,000	Homicides per 100,000	Self- Inflicted per 100,000
1980	557,969	520	322	115	22	61	0	0	93.2	93.2	57.7	20.6	3.9	10.9
1981	570,302	564	359	120	27	57	1	0	98.9	98.9	62.9	21.0	4.7	10.0
1982	582,845	543	349	117	17	60	0	0	93.2	93.2	59.9	20.1	2.9	10.3
1983	592,044	491	311	111	7	61	1	0	82.9	82.9	52.5	18.7	1.2	10.3
1984	597,125	465	301	92	19	53	0	0	77.9	77.9	50.4	15.4	3.2	8.9
1985	601,515	427	243	108	9	67	0	0	71.0	71.0	40.4	18.0	1.5	11.1
1986	608,199	429	258	85	26	58	0	2	70.5	70.2	42.4	14.0	4.3	9.5
1987	607,035	426	244	93	9	79	1	0	70.2	70.2	40.2	15.3	1.5	13.0
1988	576,446	385	199	70	18	98	0	0	66.8	66.8	34.5	12.1	3.1	17.0
1989	570,880	338	175	97	6	59	1	0	59.2	59.2	30.7	17.0	1.1	10.3
1990	535,233	302	164	69	10	58	1	0	56.4	56.4	30.6	12.9	1.9	10.8
1991	510,432	297	127	64	18	62	6	20	58.2	54.3	24.9	12.5	3.5	12.1
1992	470,315	251	129	53	12	53	4	0	53.4	53.4	27.4	11.3	2.6	11.3
1993	444,351	244	121	55	7	60	1	0	54.9	54.9	27.2	12.4	1.6	13.5
1994	426,327	223	104	48	10	58	3	0	52.3	52.3	24.4	11.3	2.3	13.6
1995	400,409	255	139	34	8	67	5	2	63.7	63.2	34.7	8.5	2.0	16.7
1996	389,001	218	85	42	11	59	2	19	56.0	51.2	21.9	10.8	2.8	15.2
1997	377,385	205	108	40	5	41	11	0	54.3	54.3	28.6	10.6	1.3	10.9
Total		6,583	3,738	1,413	241	1,111	37	43						

*Prepared by: Washington Headquarters Services
Directorate for Information
Operations and Reports
Updated: March 26, 1998*

TABLE 1D
WORLDWIDE U. S. ACTIVE DUTY MILITARY DEATHS
Comparison of Military Personnel Strength and Manner of Death

MARINE CORPS

Fiscal Year	(Sep. 30) End Strength	Total Deaths	Accident	Illness	Homicide	Self- Inflicted	Pending/ Undeter- mined	Hostile Deaths	Deaths per 100,000	Nonhostile Deaths per 100,000	Accidents per 100,000	Illnesses per 100,000	Homicides per 100,000	Self- Inflicted per 100,000
1980	188,469	288	206	20	31	28	3	0	152.8	152.8	109.3	10.6	16.4	14.9
1981	190,620	269	182	29	23	33	2	0	141.1	141.1	95.5	15.2	12.1	17.3
1982	192,380	251	176	29	16	28	2	0	130.5	130.5	91.5	15.1	8.3	14.6
1983	194,089	263	177	27	14	30	10	5	135.5	132.9	91.2	13.9	7.2	15.5
1984	196,214	459	168	19	10	24	4	234	233.9	114.7	85.6	9.7	5.1	12.2
1985	198,025	226	162	19	11	26	4	4	114.1	112.1	81.8	9.6	5.6	13.1
1986	198,814	232	154	31	13	27	7	0	116.7	116.7	77.5	15.6	6.5	13.6
1987	199,525	199	136	26	13	19	5	0	99.7	99.7	68.2	13.0	6.5	9.5
1988	197,350	198	135	23	11	25	4	0	100.3	100.3	68.4	11.7	5.6	12.7
1989	196,956	220	164	17	6	29	4	0	111.7	111.7	83.3	8.6	3.0	14.7
1990	196,652	162	100	10	13	33	4	2	82.4	81.4	50.9	5.1	6.6	16.8
1991	194,040	224	141	21	12	21	5	24	115.4	103.1	72.7	10.8	6.2	10.8
1992	184,529	176	113	22	14	21	6	0	95.4	95.4	61.2	11.9	7.6	11.4
1993	178,379	159	95	10	13	37	2	2	89.1	88.0	53.3	5.6	7.3	20.7
1994	174,158	120	69	15	11	25	0	0	68.9	68.9	39.6	8.6	6.3	14.4
1995	174,639	142	90	6	10	33	1	2	81.3	80.2	51.5	3.4	5.7	18.9
1996	174,883	169	111	13	11	32	2	0	96.6	96.6	63.5	7.4	6.3	18.3
1997	173,906	146	93	12	10	24	7	0	84.0	84.0	53.5	6.9	5.8	13.8
Total		3,903	2,472	349	242	495	72	273						

*Prepared by: Washington Headquarters Services
 Directorate for Information
 Operations and Reports
 Updated: March 26, 1998*

WORLDWIDE U.S. ACTIVE DUTY MILITARY DEATHS COMPARISON OF MILITARY PERSONNEL STRENGTH AND DEATHS

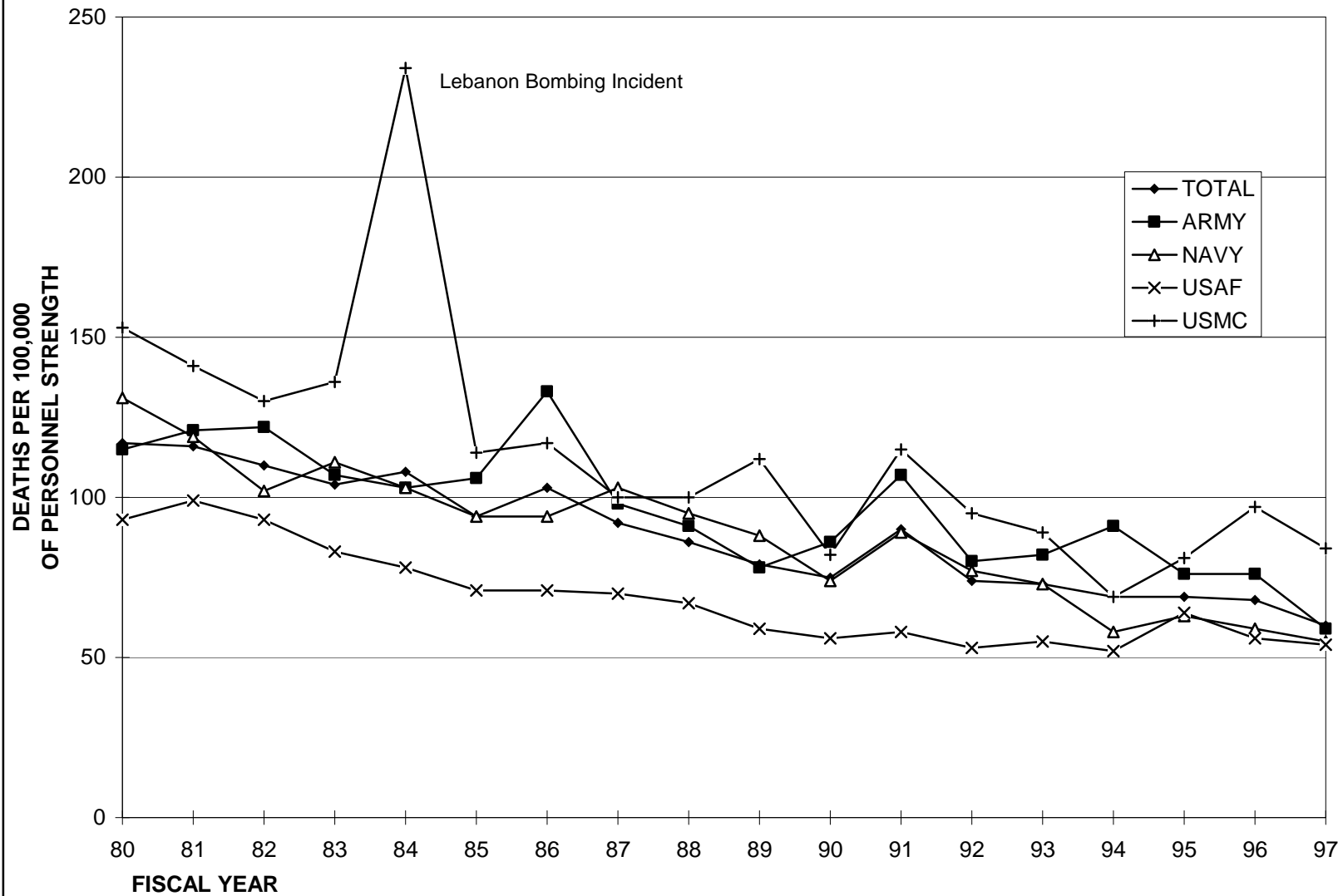


FIGURE 1

TABLE 2
WORLDWIDE U.S. ACTIVE DUTY MILITARY CASUALTIES
By Casualty Group and Military Service
OCTOBER 1979 THROUGH DECEMBER 1997

CASUALTY GROUP			ARMY	NAVY	AIR FORCE	MARINE CORPS	TOTAL	
DEATHS	HOSTILE	- Killed in Action	131	75	22	263	491	
		Died of Wounds	6	1	0	5	12	
		Died While Missing	0	0	0	1	1	
		Died While Captured	0	1	0	0	1	
		Died In Terrorist Action	30	0	21	4	55	
		TOTAL	167	77	43	273	560	
	NONHOSTILE	- Accident	7,251	5,249	3,749	2,484	18,733	
		Illness	2,447	1,491	1,419	354	5,711	
		Homicide	782	481	242	242	1,747	
		Self Inflicted	1,586	1,092	1,117	496	4,291	
		Pending/Undetermined	77	259	46	75	457	
		TOTAL	12,143	8,572	6,573	3,651	30,939	
	TOTAL DEATHS		12,310	8,649	6,616	3,924	31,499	
	MISSING	HOSTILE	- Missing in Action	0	0	0	0	0
			Captured/Interned	0	0	0	0	0
			TOTAL	0	0	0	0	0
		NONHOSTILE	- Missing	0	0	0	0	0
TOTAL MISSING			0	0	0	0	0	
RETURNED TO MILITARY CONTROL (RMC)								
	FROM	Missing in Action	0	0	0	3	3	
		Captured/Other	19	9	13	21	62	
		Nonhostile Missing	0	0	0	0	0	
	TOTAL RMC		19	9	13	24	65	

*Prepared by: Washington Headquarters Services
Directorate for Information
Operations and Reports*

WORLDWIDE U.S. ACTIVE DUTY MILITARY DEATHS NONHOSTILE DEATHS BY MANNER PER 100,000 STRENGTH

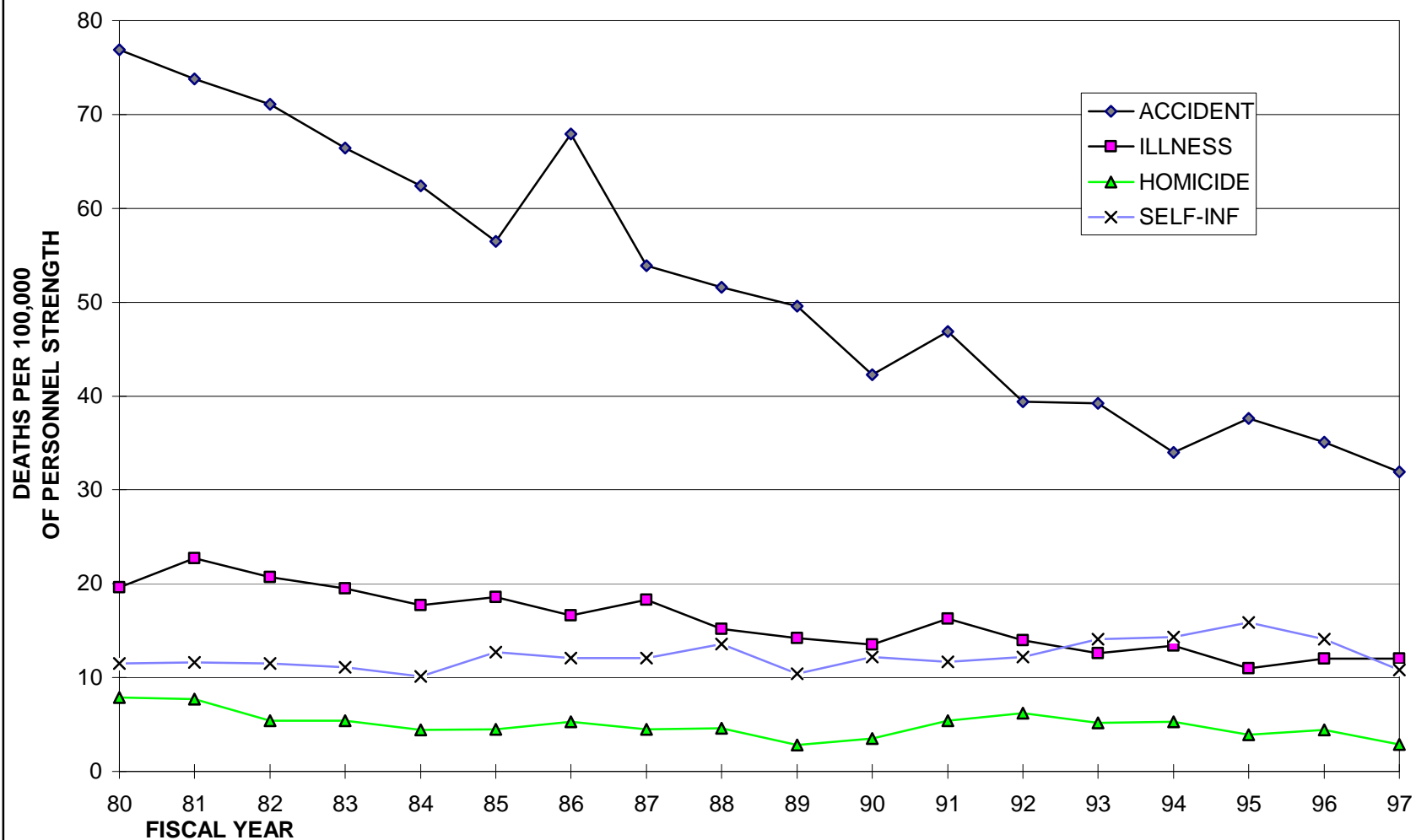


FIGURE 2

TABLE 3
WORLDWIDE U.S. ACTIVE DUTY MILITARY DEATHS
By Casualty Type and Military Service
OCTOBER 1997 THROUGH DECEMBER 1997

CASUALTY TYPE		ARMY	NAVY	AIR FORCE	MARINE CORPS	TOTAL
HOSTILE	- Killed in Action	0	0	0	0	0
	Died of Wounds	0	0	0	0	0
	Died While Missing	0	0	0	0	0
	Died While Captured	0	0	0	0	0
	Died In Terrorist Action	0	0	0	0	0
	TOTAL	0	0	0	0	0
NONHOSTILE	- Accident	33	27	11	12	83
	Illness	16	2	6	5	29
	Homicide	5	2	1	0	8
	Self Inflicted	12	10	6	1	29
	Pending/Undetermined	1	4	9	3	17
	TOTAL	67	45	33	21	166
TOTAL DEATHS		67	45	33	21	166

*Prepared by: Washington Headquarters Services
Directorate for Information
Operations and Reports*

TABLE 4
WORLDWIDE U.S. ACTIVE DUTY MILITARY DEATHS
By Home State of Record and Military Service
OCTOBER 1979 THROUGH DECEMBER 1997

HOME STATE OF RECORD	ARMY	NAVY	AIR FORCE	MARINE CORPS	TOTAL
ALABAMA	334	178	139	66	717
ALASKA	46	11	8	1	66
ARIZONA	127	127	91	69	414
ARKANSAS	193	71	72	45	381
CALIFORNIA	863	757	569	368	2,557
COLORADO	145	135	90	53	423
CONNECTICUT	124	94	80	46	344
DELAWARE	42	33	17	9	101
DISTRICT OF COLUMBIA	52	20	13	10	95
FLORIDA	678	469	367	221	1,735
GEORGIA	415	252	156	83	906
HAWAII	48	36	39	5	128
IDAHO	65	44	33	24	166
ILLINOIS	491	346	297	213	1,347
INDIANA	303	176	173	90	742
IOWA	140	98	76	48	362
KANSAS	119	103	87	30	339
KENTUCKY	214	90	96	68	468
LOUISIANA	227	136	122	74	559
MAINE	74	59	44	30	207
MARYLAND	239	168	97	83	587
MASSACHUSETTS	213	165	147	83	608
MICHIGAN	434	366	203	162	1,165
MINNESOTA	192	156	117	60	525
MISSISSIPPI	218	92	76	35	421

*Prepared by: Washington Headquarters Services
Directorate for Information
Operations and Reports*

TABLE 4
WORLDWIDE U.S. ACTIVE DUTY MILITARY DEATHS
By Home State of Record and Military Service
OCTOBER 1979 THROUGH DECEMBER 1997

HOME STATE OF RECORD	ARMY	NAVY	AIR FORCE	MARINE CORPS	TOTAL
MISSOURI	263	197	174	86	720
MONTANA	61	39	36	9	145
NEBRASKA	76	64	65	28	233
NEVADA	48	38	20	13	119
NEW HAMPSHIRE	56	42	41	20	159
NEW JERSEY	244	232	137	115	728
NEW MEXICO	97	98	66	32	293
NEW YORK	686	557	425	279	1,947
NORTH CAROLINA	471	218	169	105	963
NORTH DAKOTA	30	18	24	15	87
OHIO	510	391	319	192	1,412
OKLAHOMA	173	110	84	46	413
OREGON	134	139	94	37	404
PENNSYLVANIA	589	460	378	207	1,634
RHODE ISLAND	34	34	39	20	127
SOUTH CAROLINA	277	155	108	67	607
SOUTH DAKOTA	41	34	35	5	115
TENNESSEE	295	199	128	63	685
TEXAS	880	540	459	240	2,119
UTAH	66	30	39	15	150
VERMONT	37	20	15	8	80
VIRGINIA	420	239	136	131	926
WASHINGTON	233	198	133	78	642
WEST VIRGINIA	120	61	68	33	282
WISCONSIN	179	153	113	84	529

*Prepared by: Washington Headquarters Services
Directorate for Information
Operations and Reports*

TABLE 4
WORLDWIDE U.S. ACTIVE DUTY MILITARY DEATHS
By Home State of Record and Military Service
OCTOBER 1979 THROUGH DECEMBER 1997

HOME STATE OF RECORD	ARMY	NAVY	AIR FORCE	MARINE CORPS	TOTAL
WYOMING	27	25	15	6	73
TOTAL DEATHS(BY STATE)	12,043	8,473	6,529	3,910	30,955
OTHER	267	176	87	14	544
TOTAL DEATHS	12,310	8,649	6,616	3,924	31,499

*Prepared by: Washington Headquarters Services
Directorate for Information
Operations and Reports*

TABLE 5
WORLDWIDE U.S. ACTIVE DUTY MILITARY DEATHS
By Pay Grade and Race
OCTOBER 1979 THROUGH DECEMBER 1997

RANK / GRADE	WHITE	BLACK	ASIAN	OTHER	TOTAL
GEN OF THE ARMY - FLEET ADM	1	0	0	0	1
GENERAL - ADMIRAL	3	0	0	0	3
LT GENERAL - VICE ADMIRAL	4	0	0	0	4
MAJ GENERAL - REAR ADMIRAL(U)	10	0	0	0	10
BRIG GENERAL - REAR ADM(L)/COMMODORE	10	0	0	0	10
COLONEL - CAPTAIN	237	5	0	2	244
LIEUTENANT COL - COMMANDER	421	16	6	7	450
MAJOR - LT COMMANDER	640	30	2	9	681
CAPTAIN - LIEUTENANT	1,195	70	6	16	1,287
1st LIEUTENANT - LIEUTENANT(JG)	568	26	4	15	613
2nd LIEUTENANT - ENSIGN	321	31	2	5	359
W05 CHIEF WARRANT OFFICER	1	0	0	0	1
W04 CHIEF WARRANT OFFICER	94	2	1	1	98
W03 CHIEF WARRANT OFFICER	107	10	1	2	120
W02 CHIEF WARRANT OFFICER	153	9	0	7	169
W01 WARRANT OFFICER	64	1	0	2	67
TOTAL OFFICERS	3,829	200	22	66	4,117
E-09	290	44	4	10	348
E-08	505	116	10	13	644
E-07	1,608	334	28	48	2,018
E-06	2,366	685	65	101	3,217
E-05	3,374	1,126	56	146	4,702
E-04	4,918	1,479	65	234	6,696
E-03	4,132	1,059	56	215	5,462
E-02	2,048	455	25	82	2,610
E-01	1,160	361	16	57	1,594
TOTAL ENLISTED	20,401	5,659	325	906	27,291
TOTAL CADETS	82	6	1	2	91
TOTAL DEATHS FOR ALL GRADES	24,312	5,865	348	974	31,499

*Prepared by: Washington Headquarters Services
Directorate for Information
Operations and Reports*

TABLE 6
WORLDWIDE U.S. ACTIVE DUTY MILITARY DEATHS
By Pay Grade and Military Service
OCTOBER 1979 THROUGH DECEMBER 1997

RANK / GRADE	ARMY	NAVY	AIR FORCE	MARINE CORPS	TOTAL
GEN OF THE ARMY - FLEET ADM	1	0	0	0	1
GENERAL - ADMIRAL	0	2	1	0	3
LT GENERAL - VICE ADMIRAL	0	1	2	1	4
MAJ GENERAL - REAR ADMIRAL(U)	4	3	3	0	10
BRIG GENERAL - REAR ADM(L)/COMMODORE	6	1	3	0	10
COLONEL - CAPTAIN	91	59	81	13	244
LIEUTENANT COL - COMMANDER	144	117	163	26	450
MAJOR - LT COMMANDER	159	209	248	65	681
CAPTAIN - LIEUTENANT	260	319	536	172	1,287
1st LIEUTENANT - LIEUTENANT(JG)	155	169	168	121	613
2nd LIEUTENANT - ENSIGN	100	116	114	29	359
W05 CHIEF WARRANT OFFICER	1	0	0	0	1
W04 CHIEF WARRANT OFFICER	77	17	0	4	98
W03 CHIEF WARRANT OFFICER	104	10	0	6	120
W02 CHIEF WARRANT OFFICER	153	8	0	8	169
W01 WARRANT OFFICER	63	0	0	4	67
TOTAL OFFICERS	1,318	1,031	1,319	449	4,117
E-09	121	103	80	44	348
E-08	275	167	152	50	644
E-07	943	463	504	108	2,018
E-06	1,343	996	681	197	3,217
E-05	1,840	1,377	1,040	445	4,702
E-04	3,127	1,650	1,223	696	6,696
E-03	1,681	1,449	1,116	1,216	5,462
E-02	977	824	329	480	2,610
E-01	655	553	147	239	1,594
TOTAL ENLISTED	10,962	7,582	5,272	3,475	27,291
TOTAL CADETS	30	36	25	0	91
TOTAL DEATHS FOR ALL GRADES	12,310	8,649	6,616	3,924	31,499

*Prepared by: Washington Headquarters Services
Directorate for Information
Operations and Reports*

TABLE 7
WORLDWIDE U.S. ACTIVE DUTY MILITARY DEATHS
By Attained Age and Military Service
OCTOBER 1979 THROUGH DECEMBER 1997

ATTAINED AGE	ARMY	NAVY	AIR FORCE	MARINE CORPS	TOTAL
17	39	21	5	12	77
18	368	240	100	152	860
19	944	650	310	425	2,329
20	1,144	869	443	575	3,031
21	1,182	859	456	561	3,058
22	938	764	420	412	2,534
23	786	588	378	292	2,044
24	675	497	368	200	1,740
25	541	445	290	182	1,458
26	529	350	283	155	1,317
27	461	345	271	130	1,207
28	421	303	251	115	1,090
29	354	231	220	97	902
30	285	236	220	96	837
31	335	193	184	57	769
32	273	180	214	59	726
33	230	185	198	55	668
34	228	161	201	42	632
35	242	161	190	42	635
36	218	169	191	29	607
37	236	177	180	36	629
38	227	133	162	29	551
39	206	128	159	28	521
40	176	109	147	20	452
41	176	96	140	26	438

*Prepared by: Washington Headquarters Services
 Directorate for Information
 Operations and Reports*

TABLE 7
WORLDWIDE U.S. ACTIVE DUTY MILITARY DEATHS
By Attained Age and Military Service
OCTOBER 1979 THROUGH DECEMBER 1997

ATTAINED AGE	ARMY	NAVY	AIR FORCE	MARINE CORPS	TOTAL
42	159	89	101	20	369
43	113	87	97	16	313
44	99	63	70	8	240
45	101	63	60	14	238
46	88	54	57	8	207
47	82	45	51	7	185
48	76	26	33	4	139
49	65	22	32	6	125
50	66	26	25	3	120
51 AND OVER	247	84	109	11	451
TOTAL DEATHS	12,310	8,649	6,616	3,924	31,499

*Prepared by: Washington Headquarters Services
Directorate for Information
Operations and Reports*

TABLE 8
WORLDWIDE U.S. ACTIVE DUTY MILITARY DEATHS
By Place of Casualty and Military Service
OCTOBER 1979 THROUGH DECEMBER 1997

PLACE OF CASUALTY	ARMY	NAVY	AIR FORCE	MARINE CORPS	TOTAL
ADRIATIC SEA	0	1	1	0	2
AEGEAN SEA	3	3	0	0	6
AFGHANISTAN	1	0	0	0	1
ANDAMAN SEA	0	1	0	0	1
ANTARCTICA	0	4	0	0	4
ANTIGUA & BARBUDA	1	0	0	0	1
ARABIAN SEA	0	23	0	11	34
ARGENTINA	0	1	0	0	1
AUSTRALIA	1	13	6	1	21
AUSTRIA	2	0	1	0	3
BAHAMAS, THE	0	3	0	0	3
BAHRAIN	1	10	2	1	14
BARBADOS	1	0	0	0	1
BAY OF BENGAL	0	1	0	0	1
BELARUS	0	0	1	0	1
BELGIUM	18	4	15	0	37
BERMUDA	1	7	0	1	9
BLACK SEA	1	0	0	0	1
BOLIVIA	1	0	0	2	3
BOSNIA	4	1	1	0	6
BRAZIL	0	2	0	1	3
BRITISH INDIAN OCEAN TERRITORY	0	13	0	0	13
BRITISH VIRGIN ISLANDS	0	1	0	0	1
BULGARIA	0	0	0	1	1
CANADA	256	13	19	1	289

*Prepared by: Washington Headquarters Services
Directorate for Information
Operations and Reports*

TABLE 8
WORLDWIDE U.S. ACTIVE DUTY MILITARY DEATHS
By Place of Casualty and Military Service
OCTOBER 1979 THROUGH DECEMBER 1997

PLACE OF CASUALTY	ARMY	NAVY	AIR FORCE	MARINE CORPS	TOTAL
CARIBBEAN SEA	0	21	0	1	22
CHILE	1	0	0	0	1
CLASSIFIED LOCATION	0	0	2	0	2
COLOMBIA	3	1	0	1	5
COSTA RICA	1	1	0	0	2
CROATIA	1	0	6	0	7
CUBA	1	24	0	8	33
CYPRUS	4	0	0	1	5
CZECH REPUBLIC	1	0	0	0	1
CZECHOSLOVAKIA	1	0	0	0	1
DENMARK	1	1	2	0	4
DJIBOUTI	0	0	0	1	1
DOMINICAN REPUBLIC	0	0	1	0	1
DRAKE PASSAGE	0	4	1	0	5
EAST CHINA SEA	0	0	3	0	3
EASTERN MEDITERRANEAN	0	38	2	6	46
ECUADOR	5	0	0	0	5
EGYPT	23	1	18	0	42
EL SALVADOR	15	1	3	5	24
ETHIOPIA	1	0	0	1	2
FINLAND	1	0	0	0	1
FRANCE	7	11	3	11	32
FRENCH SOUTHERN AND ANTARCTIC LANDS	0	2	0	0	2
GERMANY	2,049	23	366	4	2,442
GIBRALTAR	1	0	0	0	1

*Prepared by: Washington Headquarters Services
Directorate for Information
Operations and Reports*

TABLE 8
WORLDWIDE U.S. ACTIVE DUTY MILITARY DEATHS
By Place of Casualty and Military Service
OCTOBER 1979 THROUGH DECEMBER 1997

PLACE OF CASUALTY	ARMY	NAVY	AIR FORCE	MARINE CORPS	TOTAL
GREECE	3	25	18	0	46
GREENLAND	0	0	1	0	1
GRENADA	12	0	0	4	16
GUATEMALA	3	0	0	0	3
GULF OF MEXICO	0	13	11	3	27
GULF OF OMAN	0	1	0	0	1
GULF OF SIAM	0	0	0	1	1
GULF OF ST. LAWRENCE	0	0	1	0	1
HAITI	3	0	0	1	4
HONDURAS	39	3	10	1	53
HONG KONG	0	6	0	1	7
HUNGARY	2	0	0	1	3
ICELAND	0	7	2	2	11
INDIA	1	0	1	0	2
INDIAN OCEAN	0	62	11	10	83
INDONESIA	0	2	0	0	2
IONIAN SEA	0	5	0	0	5
IRAN	0	0	5	3	8
IRAQ	79	3	3	0	85
IRELAND	0	0	1	0	1
ISRAEL	7	24	2	2	35
ITALY	83	127	91	8	309
JAMAICA	1	3	0	0	4
JAPAN	17	121	115	240	493
KENYA	2	1	0	0	3

*Prepared by: Washington Headquarters Services
Directorate for Information
Operations and Reports*

TABLE 8
WORLDWIDE U.S. ACTIVE DUTY MILITARY DEATHS
By Place of Casualty and Military Service
OCTOBER 1979 THROUGH DECEMBER 1997

PLACE OF CASUALTY	ARMY	NAVY	AIR FORCE	MARINE CORPS	TOTAL
KOREA, DEMOCRATIC PEOPLE'S REPUBLIC (N)	3	0	3	1	7
KOREA, REPUBLIC OF (S)	237	9	89	60	395
KUWAIT	10	2	2	15	29
LAKE HURON	0	0	1	0	1
LEBANON	10	23	0	237	270
LUXEMBOURG	0	0	3	0	3
MALAYSIA	1	3	0	1	5
MALTA	0	1	0	0	1
MEXICO	6	25	3	12	46
MOROCCO	1	0	0	0	1
NAMIBIA	1	0	0	0	1
NEPAL	1	0	0	0	1
NETHERLANDS	10	0	18	1	29
NETHERLANDS ANTILLES	0	1	1	0	2
NEW ZEALAND	0	1	0	0	1
NORTH ATLANTIC OCEAN	0	205	32	29	266
NORTH PACIFIC OCEAN	0	168	13	7	188
NORTH SEA	0	0	8	5	13
NORWAY	1	0	1	11	13
NORWEGIAN SEA	0	1	0	0	1
OMAN	0	2	6	0	8
OTHER	1	6	0	0	7
PAKISTAN	2	1	2	1	6
PANAMA	139	20	26	6	191
PARAGUAY	3	0	1	0	4

*Prepared by: Washington Headquarters Services
Directorate for Information
Operations and Reports*

TABLE 8
WORLDWIDE U.S. ACTIVE DUTY MILITARY DEATHS
By Place of Casualty and Military Service
OCTOBER 1979 THROUGH DECEMBER 1997

PLACE OF CASUALTY	ARMY	NAVY	AIR FORCE	MARINE CORPS	TOTAL
PERSIAN GULF	0	53	15	2	70
PHILIPPINE SEA	0	6	0	0	6
PHILIPPINES	9	121	77	26	233
POLAND	2	1	0	0	3
PORTUGAL	4	2	10	0	16
RED SEA	0	5	0	0	5
SAUDI ARABIA	147	3	39	43	232
SEA OF JAPAN	0	4	1	0	5
SINGAPORE	0	4	0	1	5
SLOVAKIA	0	0	1	0	1
SOMALIA	27	0	0	4	31
SOUTH ATLANTIC OCEAN	0	3	0	0	3
SOUTH CHINA SEA	3	24	1	0	28
SOUTH PACIFIC OCEAN	0	5	6	2	13
SPAIN	4	68	92	5	169
SRI LANKA	0	2	0	0	2
ST. CHRISTOPHER & NEVIS ISLANDS	0	1	0	0	1
ST. HELENA ISLAND	0	1	0	0	1
SULU SEA	0	0	12	0	12
SWITZERLAND	2	0	4	1	7
THAILAND	3	13	6	2	24
TUNISIA	0	0	1	0	1
TURKEY	16	4	74	6	100
UNITED ARAB EMIRATES	0	15	6	1	22
UNITED KINGDOM	18	36	205	7	266

*Prepared by: Washington Headquarters Services
Directorate for Information
Operations and Reports*

TABLE 8
WORLDWIDE U.S. ACTIVE DUTY MILITARY DEATHS
By Place of Casualty and Military Service
OCTOBER 1979 THROUGH DECEMBER 1997

PLACE OF CASUALTY	ARMY	NAVY	AIR FORCE	MARINE CORPS	TOTAL
VENEZUELA	0	1	0	0	1
VIETNAM	1	0	0	0	1
WESTERN MEDITERRANEAN	0	33	0	5	38
WESTERN SAMOA	0	1	0	0	1
YELLOW SEA	0	0	1	1	2
YUGOSLAVIA	1	1	0	0	2
ZAIRE	0	0	0	1	1
U.S. AND TERRITORIES					
UNITED STATES	8,948	6,985	5,091	3,078	24,102
AMERICAN SAMOA	1	7	0	0	8
FED. STATES OF MICRONESIA	2	0	0	0	2
GUAM	2	88	35	9	134
MISC. PACIFIC ISLANDS	1	1	0	0	2
PUERTO RICO	33	51	5	9	98
U.S. VIRGIN ISLANDS	1	10	0	0	11
TOTAL DEATHS	12,310	8,649	6,616	3,924	31,499

*Prepared by: Washington Headquarters Services
Directorate for Information
Operations and Reports*

TABLE 9
WORLDWIDE U.S. ACTIVE DUTY MILITARY DEATHS
By Place of Casualty and Casualty Group
OCTOBER 1979 THROUGH DECEMBER 1997

PLACE OF CASUALTY	TOTAL DEATHS	NONHOSTILE DEATHS					HOSTILE DEATHS ALL CAUSES
		ACCIDENT	ILLNESS	HOMICIDE	SELF INFLICTED	PENDING/ UNDERTERM.	
ADRIATIC SEA	2	2	0	0	0	0	0
AEGEAN SEA	6	5	1	0	0	0	0
AFGHANISTAN	1	0	1	0	0	0	0
ANDAMAN SEA	1	0	1	0	0	0	0
ANTARCTICA	4	3	0	0	0	1	0
ANTIGUA & BARBUDA	1	1	0	0	0	0	0
ARABIAN SEA	34	29	3	0	1	1	0
ARGENTINA	1	0	1	0	0	0	0
AUSTRALIA	21	11	4	1	2	3	0
AUSTRIA	3	3	0	0	0	0	0
BAHAMAS, THE	3	3	0	0	0	0	0
BAHRAIN	14	7	6	1	0	0	0
BARBADOS	1	1	0	0	0	0	0
BAY OF BENGAL	1	0	0	0	1	0	0
BELARUS	1	0	1	0	0	0	0
BELGIUM	37	26	10	0	1	0	0
BERMUDA	9	7	1	0	1	0	0
BLACK SEA	1	1	0	0	0	0	0
BOLIVIA	3	2	0	0	1	0	0
BOSNIA	6	3	1	0	2	0	0
BRAZIL	3	1	2	0	0	0	0
BRITISH INDIAN OCEAN TERRITORY	13	7	4	0	0	2	0
BRITISH VIRGIN ISLANDS	1	1	0	0	0	0	0
BULGARIA	1	1	0	0	0	0	0
CANADA	289	284	3	0	0	2	0

*Prepared by: Washington Headquarters Services
Directorate for Information
Operations and Reports*

TABLE 9
WORLDWIDE U.S. ACTIVE DUTY MILITARY DEATHS
By Place of Casualty and Casualty Group
OCTOBER 1979 THROUGH DECEMBER 1997

PLACE OF CASUALTY	TOTAL DEATHS	NONHOSTILE DEATHS					HOSTILE DEATHS ALL CAUSES
		ACCIDENT	ILLNESS	HOMICIDE	SELF INFLICTED	PENDING/ UNDERTERM.	
CARIBBEAN SEA	22	16	1	0	0	1	4
CHILE	1	1	0	0	0	0	0
CLASSIFIED LOCATION	2	1	1	0	0	0	0
COLOMBIA	5	4	0	0	1	0	0
COSTA RICA	2	2	0	0	0	0	0
CROATIA	7	6	0	0	0	0	1
CUBA	33	25	3	0	3	2	0
CYPRUS	5	4	0	0	0	0	1
CZECH REPUBLIC	1	1	0	0	0	0	0
CZECHOSLOVAKIA	1	1	0	0	0	0	0
DENMARK	4	4	0	0	0	0	0
DJIBOUTI	1	0	0	0	1	0	0
DOMINICAN REPUBLIC	1	0	1	0	0	0	0
DRAKE PASSAGE	5	5	0	0	0	0	0
EAST CHINA SEA	3	3	0	0	0	0	0
EASTERN MEDITERRANEAN	46	40	3	0	1	0	2
ECUADOR	5	4	1	0	0	0	0
EGYPT	42	35	7	0	0	0	0
EL SALVADOR	24	15	0	2	1	0	6
ETHIOPIA	2	2	0	0	0	0	0
FINLAND	1	0	1	0	0	0	0
FRANCE	32	27	2	2	0	1	0
FRENCH SOUTHERN AND ANTARCTIC LANDS	2	2	0	0	0	0	0
GERMANY	2,442	1,568	520	88	247	17	2
GIBRALTAR	1	0	1	0	0	0	0

*Prepared by: Washington Headquarters Services
Directorate for Information
Operations and Reports*

TABLE 9
WORLDWIDE U.S. ACTIVE DUTY MILITARY DEATHS
By Place of Casualty and Casualty Group
OCTOBER 1979 THROUGH DECEMBER 1997

PLACE OF CASUALTY	TOTAL DEATHS	NONHOSTILE DEATHS					HOSTILE DEATHS ALL CAUSES
		ACCIDENT	ILLNESS	HOMICIDE	SELF INFLICTED	PENDING/ UNDERTERM.	
GREECE	46	27	14	2	1	0	2
GREENLAND	1	0	1	0	0	0	0
GRENADA	16	1	0	0	1	0	14
GUATEMALA	3	3	0	0	0	0	0
GULF OF MEXICO	27	26	1	0	0	0	0
GULF OF OMAN	1	1	0	0	0	0	0
GULF OF SIAM	1	0	1	0	0	0	0
GULF OF ST. LAWRENCE	1	1	0	0	0	0	0
HAITI	4	0	0	1	3	0	0
HONDURAS	53	45	4	3	0	0	1
HONG KONG	7	4	2	0	0	1	0
HUNGARY	3	1	2	0	0	0	0
ICELAND	11	5	4	0	2	0	0
INDIA	2	2	0	0	0	0	0
INDIAN OCEAN	83	73	7	0	2	1	0
INDONESIA	2	1	1	0	0	0	0
IONIAN SEA	5	5	0	0	0	0	0
IRAN	8	8	0	0	0	0	0
IRAQ	85	33	2	0	1	0	49
IRELAND	1	0	1	0	0	0	0
ISRAEL	35	32	2	0	1	0	0
ITALY	309	223	60	5	12	8	1
JAMAICA	4	1	1	1	1	0	0
JAPAN	493	306	109	17	47	14	0
KENYA	3	3	0	0	0	0	0

*Prepared by: Washington Headquarters Services
Directorate for Information
Operations and Reports*

TABLE 9
WORLDWIDE U.S. ACTIVE DUTY MILITARY DEATHS
By Place of Casualty and Casualty Group
OCTOBER 1979 THROUGH DECEMBER 1997

PLACE OF CASUALTY	TOTAL DEATHS	NONHOSTILE DEATHS					HOSTILE DEATHS ALL CAUSES
		ACCIDENT	ILLNESS	HOMICIDE	SELF INFLICTED	PENDING/ UNDERTERM.	
KOREA, DEMOCRATIC PEOPLE'S REPUBLIC (N)	7	3	3	0	1	0	0
KOREA, REPUBLIC OF (S)	395	232	108	10	42	3	0
KUWAIT	29	14	0	0	1	0	14
LAKE HURON	1	1	0	0	0	0	0
LEBANON	270	8	0	0	1	1	260
LUXEMBOURG	3	3	0	0	0	0	0
MALAYSIA	5	4	1	0	0	0	0
MALTA	1	0	1	0	0	0	0
MEXICO	46	32	2	9	1	2	0
MOROCCO	1	1	0	0	0	0	0
NAMIBIA	1	1	0	0	0	0	0
NEPAL	1	0	1	0	0	0	0
NETHERLANDS	29	18	8	0	3	0	0
NETHERLANDS ANTILLES	2	2	0	0	0	0	0
NEW ZEALAND	1	1	0	0	0	0	0
NORTH ATLANTIC OCEAN	266	234	11	2	11	8	0
NORTH PACIFIC OCEAN	188	156	18	0	6	8	0
NORTH SEA	13	13	0	0	0	0	0
NORWAY	13	10	3	0	0	0	0
NORWEGIAN SEA	1	1	0	0	0	0	0
OMAN	8	7	1	0	0	0	0
OTHER	7	1	4	1	1	0	0
PAKISTAN	6	3	1	0	0	1	1
PANAMA	191	125	18	10	13	2	23
PARAGUAY	4	2	0	1	1	0	0

*Prepared by: Washington Headquarters Services
Directorate for Information
Operations and Reports*

TABLE 9
WORLDWIDE U.S. ACTIVE DUTY MILITARY DEATHS
By Place of Casualty and Casualty Group
OCTOBER 1979 THROUGH DECEMBER 1997

PLACE OF CASUALTY	TOTAL DEATHS	NONHOSTILE DEATHS					HOSTILE DEATHS ALL CAUSES
		ACCIDENT	ILLNESS	HOMICIDE	SELF INFLECTED	PENDING/ UNDERTERM.	
PERSIAN GULF	70	14	0	0	0	2	54
PHILIPPINE SEA	6	3	1	0	1	1	0
PHILIPPINES	233	132	66	20	12	3	0
POLAND	3	3	0	0	0	0	0
PORTUGAL	16	6	7	0	3	0	0
RED SEA	5	4	1	0	0	0	0
SAUDI ARABIA	232	112	23	1	7	1	88
SEA OF JAPAN	5	4	1	0	0	0	0
SINGAPORE	5	1	2	0	1	1	0
SLOVAKIA	1	1	0	0	0	0	0
SOMALIA	31	2	0	0	1	0	28
SOUTH ATLANTIC OCEAN	3	2	0	0	1	0	0
SOUTH CHINA SEA	28	26	2	0	0	0	0
SOUTH PACIFIC OCEAN	13	13	0	0	0	0	0
SPAIN	169	128	20	8	10	2	1
SRI LANKA	2	0	1	0	1	0	0
ST. CHRISTOPHER & NEVIS ISLANDS	1	1	0	0	0	0	0
ST. HELENA ISLAND	1	1	0	0	0	0	0
SULU SEA	12	12	0	0	0	0	0
SWITZERLAND	7	6	1	0	0	0	0
THAILAND	24	13	5	2	0	4	0
TUNISIA	1	1	0	0	0	0	0
TURKEY	100	69	18	5	7	1	0
UNITED ARAB EMIRATES	22	17	4	0	0	1	0
UNITED KINGDOM	266	163	59	2	41	1	0

*Prepared by: Washington Headquarters Services
Directorate for Information
Operations and Reports*

TABLE 9
WORLDWIDE U.S. ACTIVE DUTY MILITARY DEATHS
By Place of Casualty and Casualty Group
OCTOBER 1979 THROUGH DECEMBER 1997

PLACE OF CASUALTY	TOTAL DEATHS	NONHOSTILE DEATHS					HOSTILE DEATHS ALL CAUSES
		ACCIDENT	ILLNESS	HOMICIDE	SELF INFLICTED	PENDING/ UNDERTERM.	
VENEZUELA	1	1	0	0	0	0	0
VIETNAM	1	0	0	0	0	1	0
WESTERN MEDITERRANEAN	38	32	3	1	2	0	0
WESTERN SAMOA	1	1	0	0	0	0	0
YELLOW SEA	2	1	1	0	0	0	0
YUGOSLAVIA	2	0	1	0	0	1	0
ZAIRE	1	0	0	0	1	0	0
U.S. AND TERRITORIES							
UNITED STATES	24,102	13,980	4,475	1,526	3,762	351	8
AMERICAN SAMOA	8	6	2	0	0	0	0
FED. STATES OF MICRONESIA	2	1	0	0	1	0	0
GUAM	134	83	20	13	14	4	0
MISC. PACIFIC ISLANDS	2	1	1	0	0	0	0
PUERTO RICO	98	50	23	10	11	4	0
U.S. VIRGIN ISLANDS	11	6	2	3	0	0	0
TOTAL DEATHS	31,499	18,733	5,711	1,747	4,291	457	560

*Prepared by: Washington Headquarters Services
Directorate for Information
Operations and Reports*

TABLE 10
WORLDWIDE U. S. ACTIVE DUTY MILITARY DEATHS
Comparison of Military Personnel Strength and Manner of Death

MALES - TOTAL

Fiscal Year	(Sep. 30) End Strength	Total Deaths	Accident	Illness	Homicide	Self- Inflicted	Pending/ Undeter- mined	Hostile Deaths	Deaths per 100,000	Nonhostile Deaths per 100,000	Accidents per 100,000	Illnesses per 100,000	Homicides per 100,000	Self- Inflicted per 100,000
1980	1,879,209	2,292	1,519	384	145	229	14	1	122.0	121.9	80.8	20.4	7.7	12.2
1981	1,897,909	2,323	1,482	451	151	229	10	0	122.4	122.4	78.1	23.8	8.0	12.1
1982	1,919,564	2,209	1,435	420	102	234	18	0	115.1	115.1	74.8	21.9	5.3	12.2
1983	1,925,471	2,088	1,353	392	98	215	24	6	108.4	108.1	70.3	20.4	5.1	11.2
1984	1,935,327	2,216	1,284	361	78	203	14	276	114.5	100.2	66.3	18.7	4.0	10.5
1985	1,939,426	1,929	1,174	381	80	264	25	5	99.5	99.2	60.5	19.6	4.1	13.6
1986	1,950,223	2,143	1,419	343	100	248	31	2	109.9	109.8	72.8	17.6	5.1	12.7
1987	1,950,412	1,880	1,110	372	80	256	24	38	96.4	94.4	56.9	19.1	4.1	13.1
1988	1,913,377	1,738	1,050	304	86	273	23	2	90.8	90.7	54.9	15.9	4.5	14.3
1989	1,897,406	1,602	1,012	283	51	216	40	0	84.4	84.4	53.3	14.9	2.7	11.4
1990	1,816,687	1,446	825	261	62	233	41	24	79.6	78.3	45.4	14.4	3.4	12.8
1991	1,764,417	1,699	890	305	93	226	42	143	96.3	88.2	50.4	17.3	5.3	12.8
1992	1,597,129	1,252	676	236	98	209	32	1	78.4	78.3	42.3	14.8	6.1	13.1
1993	1,501,597	1,183	645	199	77	232	20	10	78.8	78.1	43.0	13.3	5.1	15.5
1994	1,410,802	1,036	518	196	72	221	10	19	73.4	72.1	36.7	13.9	5.1	15.7
1995	1,322,108	973	531	153	46	234	7	2	73.6	73.4	40.2	11.6	3.5	17.7
1996	1,274,029	944	488	166	55	199	15	21	74.1	72.4	38.3	13.0	4.3	15.6
1997	1,238,036	788	424	156	33	146	29	0	63.6	63.6	34.2	12.6	2.7	11.8
Total		29,741	17,835	5,363	1,507	4,067	419	550						

*Prepared by: Washington Headquarters Services
 Directorate for Information
 Operations and Reports
 Updated: March 26, 1998*

TABLE 10A
WORLDWIDE U. S. ACTIVE DUTY MILITARY DEATHS
Comparison of Military Personnel Strength and Manner of Death

MALES - ARMY

Fiscal Year	(Sep. 30) End Strength	Total Deaths	Accident	Illness	Homicide	Self- Inflicted	Pending/ Undeter- mined	Hostile Deaths	Deaths per 100,000	Nonhostile Deaths per 100,000	Accidents per 100,000	Illnesses per 100,000	Homicides per 100,000	Self- Inflicted per 100,000
1980	707,698	839	539	154	59	84	2	1	118.6	118.4	76.2	21.8	8.3	11.9
1981	707,766	909	548	198	76	85	2	0	128.4	128.4	77.4	28.0	10.7	12.0
1982	707,287	914	566	195	52	95	6	0	129.2	129.2	80.0	27.6	7.4	13.4
1983	703,618	770	489	163	47	68	3	0	109.4	109.4	69.5	23.2	6.7	9.7
1984	702,824	769	485	155	36	74	2	17	109.4	107.0	69.0	22.1	5.1	10.5
1985	701,540	785	465	155	43	120	2	0	111.9	111.9	66.3	22.1	6.1	17.1
1986	700,048	988	695	145	41	102	5	0	141.1	141.1	99.3	20.7	5.9	14.6
1987	697,638	713	439	152	39	80	2	1	102.2	102.1	62.9	21.8	5.6	11.5
1988	688,079	666	405	129	36	93	3	0	96.8	96.8	58.9	18.7	5.2	13.5
1989	683,247	562	353	99	20	74	16	0	82.3	82.3	51.7	14.5	2.9	10.8
1990	648,782	597	340	119	18	97	5	18	92.0	89.2	52.4	18.3	2.8	15.0
1991	630,515	719	350	141	36	94	5	93	114.0	99.3	55.5	22.4	5.7	14.9
1992	537,020	455	234	98	38	80	4	1	84.7	84.5	43.6	18.2	7.1	14.9
1993	501,095	437	232	77	37	81	2	8	87.2	85.6	46.3	15.4	7.4	16.2
1994	471,465	458	225	92	36	84	2	19	97.1	93.1	47.7	19.5	7.6	17.8
1995	440,513	346	181	81	15	68	1	0	78.5	78.5	41.1	18.4	3.4	15.4
1996	421,480	346	185	69	16	70	4	2	82.1	81.6	43.9	16.4	3.8	16.6
1997	418,880	273	135	73	11	49	5	0	65.2	65.2	32.2	17.4	2.6	11.7
Total		11,546	6,866	2,295	656	1,498	71	160						

*Prepared by: Washington Headquarters Services
 Directorate for Information
 Operations and Reports
 Updated: March 26, 1998*

TABLE 10B
WORLDWIDE U. S. ACTIVE DUTY MILITARY DEATHS
Comparison of Military Personnel Strength and Manner of Death

MALES - NAVY

Fiscal Year	(Sep. 30) End Strength	Total Deaths	Accident	Illness	Homicide	Self- Inflicted	Pending/ Undeter- mined	Hostile Deaths	Deaths per 100,000	Nonhostile Deaths per 100,000	Accidents per 100,000	Illnesses per 100,000	Homicides per 100,000	Self- Inflicted per 100,000
1980	492,173	680	470	98	41	61	10	0	138.2	138.2	95.5	19.9	8.3	12.4
1981	500,316	623	414	113	29	62	5	0	124.5	124.5	82.7	22.6	5.8	12.4
1982	509,935	543	373	85	20	55	10	0	106.5	106.5	73.1	16.7	3.9	10.8
1983	510,481	591	389	99	32	60	10	1	115.8	115.6	76.2	19.4	6.3	11.8
1984	515,505	558	346	101	20	58	8	25	108.2	103.4	67.1	19.6	3.9	11.3
1985	518,102	514	313	104	22	55	19	1	99.2	99.0	60.4	20.1	4.2	10.6
1986	526,655	523	327	89	24	64	19	0	99.3	99.3	62.1	16.9	4.6	12.2
1987	531,884	576	313	110	21	79	16	37	108.3	101.3	58.8	20.7	3.9	14.9
1988	535,563	520	324	85	24	69	16	2	97.1	96.7	60.5	15.9	4.5	12.9
1989	533,134	506	334	76	20	57	19	0	94.9	94.9	62.6	14.3	3.8	10.7
1990	519,510	408	231	67	23	51	32	4	78.5	77.8	44.5	12.9	4.4	9.8
1991	510,871	484	284	83	33	52	26	6	94.7	93.6	55.6	16.2	6.5	10.2
1992	482,578	393	212	66	37	60	18	0	81.4	81.4	43.9	13.7	7.7	12.4
1993	452,349	359	200	63	23	58	15	0	79.4	79.4	44.2	13.9	5.1	12.8
1994	412,837	256	129	46	18	58	5	0	62.0	62.0	31.2	11.1	4.4	14.0
1995	378,787	254	132	35	16	69	2	0	67.1	67.1	34.8	9.2	4.2	18.2
1996	362,043	230	117	45	18	43	7	0	63.5	63.5	32.3	12.4	5.0	11.9
1997	342,986	197	106	38	7	39	7	0	57.4	57.4	30.9	11.1	2.0	11.4
Total		8,215	5,014	1,403	428	1,050	244	76						

*Prepared by: Washington Headquarters Services
Directorate for Information
Operations and Reports
Updated: March 26, 1998*

TABLE 10C
WORLDWIDE U. S. ACTIVE DUTY MILITARY DEATHS
Comparison of Military Personnel Strength and Manner of Death

MALES - AIR FORCE

Fiscal Year	(Sep. 30) End Strength	Total Deaths	Accident	Illness	Homicide	Self- Inflicted	Pending/ Undeter- mined	Hostile Deaths	Deaths per 100,000	Nonhostile Deaths per 100,000	Accidents per 100,000	Illnesses per 100,000	Homicides per 100,000	Self- Inflicted per 100,000
1980	497,575	489	306	112	15	56	0	0	98.3	98.3	61.5	22.5	3.0	11.3
1981	506,824	527	339	113	23	51	1	0	104.0	104.0	66.9	22.3	4.5	10.1
1982	518,397	504	323	111	14	56	0	0	97.2	97.2	62.3	21.4	2.7	10.8
1983	526,179	470	300	106	6	57	1	0	89.3	89.3	57.0	20.1	1.1	10.8
1984	530,009	440	288	89	14	49	0	0	83.0	83.0	54.3	16.8	2.6	9.2
1985	531,454	408	235	103	7	63	0	0	76.8	76.8	44.2	19.4	1.3	11.9
1986	534,595	402	244	78	22	56	0	2	75.2	74.8	45.6	14.6	4.1	10.5
1987	531,154	396	225	84	8	78	1	0	74.6	74.6	42.4	15.8	1.5	14.7
1988	501,998	357	188	67	15	87	0	0	71.1	71.1	37.5	13.3	3.0	17.3
1989	493,777	318	163	91	6	57	1	0	64.4	64.4	33.0	18.4	1.2	11.5
1990	461,099	283	154	65	9	54	1	0	61.4	61.4	33.4	14.1	2.0	11.7
1991	437,996	275	116	60	14	59	6	20	62.8	58.2	26.5	13.7	3.2	13.5
1992	401,526	235	123	50	10	48	4	0	58.5	58.5	30.6	12.5	2.5	12.0
1993	377,619	229	118	49	4	57	1	0	60.6	60.6	31.2	13.0	1.1	15.1
1994	360,013	204	95	44	8	54	3	0	56.7	56.7	26.4	12.2	2.2	15.0
1995	336,262	235	131	31	5	65	3	0	69.9	69.9	39.0	9.2	1.5	19.3
1996	324,187	202	76	39	10	56	2	19	62.3	56.4	23.4	12.0	3.1	17.3
1997	311,550	177	94	33	5	35	10	0	56.8	56.8	30.2	10.6	1.6	11.2
Total		6,151	3,518	1,325	195	1,038	34	41						

*Prepared by: Washington Headquarters Services
 Directorate for Information
 Operations and Reports
 Updated: March 26, 1998*

TABLE 10D
WORLDWIDE U. S. ACTIVE DUTY MILITARY DEATHS
Comparison of Military Personnel Strength and Manner of Death

MALES - MARINE CORPS

Fiscal Year	(Sep. 30) End Strength	Total Deaths	Accident	Illness	Homicide	Self- Inflicted	Pending/ Undeter- mined	Hostile Deaths	Deaths per 100,000	Nonhostile Deaths per 100,000	Accidents per 100,000	Illnesses per 100,000	Homicides per 100,000	Self- Inflicted per 100,000
1980	181,763	284	204	20	30	28	2	0	156.2	156.2	112.2	11.0	16.5	15.4
1981	183,003	264	181	27	23	31	2	0	144.3	144.3	98.9	14.8	12.6	16.9
1982	183,945	248	173	29	16	28	2	0	134.8	134.8	94.0	15.8	8.7	15.2
1983	185,193	257	175	24	13	30	10	5	138.8	136.1	94.5	13.0	7.0	16.2
1984	186,989	449	165	16	8	22	4	234	240.1	115.0	88.2	8.6	4.3	11.8
1985	188,330	222	161	19	8	26	4	4	117.9	115.8	85.5	10.1	4.2	13.8
1986	188,925	230	153	31	13	26	7	0	121.7	121.7	81.0	16.4	6.9	13.8
1987	189,736	195	133	26	12	19	5	0	102.8	102.8	70.1	13.7	6.3	10.0
1988	187,737	195	133	23	11	24	4	0	103.9	103.9	70.8	12.3	5.9	12.8
1989	187,248	216	162	17	5	28	4	0	115.4	115.4	86.5	9.1	2.7	15.0
1990	187,296	158	100	10	12	31	3	2	84.4	83.3	53.4	5.3	6.4	16.6
1991	185,035	221	140	21	10	21	5	24	119.4	106.5	75.7	11.3	5.4	11.3
1992	176,005	169	107	22	13	21	6	0	96.0	96.0	60.8	12.5	7.4	11.9
1993	170,534	158	95	10	13	36	2	2	92.7	91.5	55.7	5.9	7.6	21.1
1994	166,487	118	69	14	10	25	0	0	70.9	70.9	41.4	8.4	6.0	15.0
1995	166,546	138	87	6	10	32	1	2	82.9	81.7	52.2	3.6	6.0	19.2
1996	166,319	166	110	13	11	30	2	0	99.8	99.8	66.1	7.8	6.6	18.0
1997	164,620	141	89	12	10	23	7	0	85.7	85.7	54.1	7.3	6.1	14.0
Total		3,829	2,437	340	228	481	70	273						

*Prepared by: Washington Headquarters Services
 Directorate for Information
 Operations and Reports
 Updated: March 26, 1998*

TABLE 11
WORLDWIDE U. S. ACTIVE DUTY MILITARY DEATHS
Comparison of Military Personnel Strength and Manner of Death

FEMALES - TOTAL

Fiscal Year	(Sep. 30) End Strength	Total Deaths	Accident	Illness	Homicide	Self- Inflicted	Pending/ Undeter- mined	Hostile Deaths	Deaths per 100,000	Nonhostile Deaths per 100,000	Accidents per 100,000	Illnesses per 100,000	Homicides per 100,000	Self- Inflicted per 100,000
1980	171,418	99	58	17	16	7	1	0	57.8	57.8	33.8	9.9	9.3	4.1
1981	184,651	98	54	22	9	13	0	0	53.1	53.1	29.2	11.9	4.9	7.0
1982	189,048	102	65	17	11	9	0	0	54.0	54.0	34.4	9.0	5.8	4.8
1983	197,878	114	56	21	16	20	1	0	57.6	57.6	28.3	10.6	8.1	10.1
1984	202,830	97	51	18	16	12	0	0	47.8	47.8	25.1	8.9	7.9	5.9
1985	211,606	87	41	19	17	9	1	0	41.1	41.1	19.4	9.0	8.0	4.3
1986	218,889	98	54	16	14	14	0	0	44.8	44.8	24.7	7.3	6.4	6.4
1987	223,805	111	61	25	17	7	1	0	49.6	49.6	27.3	11.2	7.6	3.1
1988	224,836	107	54	20	13	18	1	1	47.6	47.1	24.0	8.9	5.8	8.0
1989	232,823	77	45	19	8	5	0	0	33.1	33.1	19.3	8.2	3.4	2.1
1990	227,018	80	39	14	9	17	1	0	35.2	35.2	17.2	6.2	4.0	7.5
1991	221,138	88	41	18	15	6	3	5	39.8	37.5	18.5	8.1	6.8	2.7
1992	210,048	80	36	17	14	11	2	0	38.1	38.1	17.1	8.1	6.7	5.2
1993	203,506	62	24	15	11	9	3	0	30.5	30.5	11.8	7.4	5.4	4.4
1994	199,688	73	30	20	14	9	0	0	36.6	36.6	15.0	10.0	7.0	4.5
1995	196,116	82	41	14	13	8	2	4	41.8	39.8	20.9	7.1	6.6	4.1
1996	197,693	63	30	11	10	10	2	0	31.9	31.9	15.2	5.6	5.1	5.1
1997	200,526	74	35	16	9	11	3	0	36.9	36.9	17.5	8.0	4.5	5.5
Total		1,592	815	319	232	195	21	10						

*Prepared by: Washington Headquarters Services
 Directorate for Information
 Operations and Reports
 Updated: March 26, 1998*

TABLE 11A
WORLDWIDE U. S. ACTIVE DUTY MILITARY DEATHS
Comparison of Military Personnel Strength and Manner of Death

FEMALES - ARMY

Fiscal Year	(Sep. 30) End Strength	Total Deaths	Accident	Illness	Homicide	Self- Inflicted	Pending/ Undeter- mined	Hostile Deaths	Deaths per 100,000	Nonhostile Deaths per 100,000	Accidents per 100,000	Illnesses per 100,000	Homicides per 100,000	Self- Inflicted per 100,000
1980	69,338	51	33	10	6	2	0	0	73.6	73.6	47.6	14.4	8.7	2.9
1981	73,653	37	21	9	3	4	0	0	50.2	50.2	28.5	12.2	4.1	5.4
1982	73,104	40	24	6	6	4	0	0	54.7	54.7	32.8	8.2	8.2	5.5
1983	76,025	61	29	11	10	11	0	0	80.2	80.2	38.1	14.5	13.2	14.5
1984	77,356	37	19	7	6	5	0	0	47.8	47.8	24.6	9.0	7.8	6.5
1985	79,247	39	18	8	9	3	1	0	49.2	49.2	22.7	10.1	11.4	3.8
1986	80,932	48	27	6	7	8	0	0	59.3	59.3	33.4	7.4	8.6	9.9
1987	83,177	51	26	10	13	2	0	0	61.3	61.3	31.3	12.0	15.6	2.4
1988	83,768	36	17	9	6	4	0	0	43.0	43.0	20.3	10.7	7.2	4.8
1989	86,494	35	22	8	3	2	0	0	40.5	40.5	25.4	9.2	3.5	2.3
1990	83,621	35	17	4	7	7	0	0	41.9	41.9	20.3	4.8	8.4	8.4
1991	80,306	42	19	10	4	3	1	5	52.3	46.1	23.7	12.5	5.0	3.7
1992	73,430	35	13	7	9	6	0	0	47.7	47.7	17.7	9.5	12.3	8.2
1993	71,328	31	14	6	7	3	1	0	43.5	43.5	19.6	8.4	9.8	4.2
1994	69,878	34	14	9	7	4	0	0	48.7	48.7	20.0	12.9	10.0	5.7
1995	68,046	39	22	7	5	3	0	2	57.3	54.4	32.3	10.3	7.3	4.4
1996	69,623	27	12	4	5	5	1	0	38.8	38.8	17.2	5.7	7.2	7.2
1997	72,827	19	5	5	8	0	1	0	26.1	26.1	6.9	6.9	11.0	0.0
Total		697	352	136	121	76	5	7						

*Prepared by: Washington Headquarters Services
 Directorate for Information
 Operations and Reports
 Updated: March 26, 1998*

TABLE 11B
WORLDWIDE U. S. ACTIVE DUTY MILITARY DEATHS
Comparison of Military Personnel Strength and Manner of Death

FEMALES - NAVY

Fiscal Year	(Sep. 30) End Strength	Total Deaths	Accident	Illness	Homicide	Self- Inflicted	Pending/ Undeter- mined	Hostile Deaths	Deaths per 100,000	Nonhostile Deaths per 100,000	Accidents per 100,000	Illnesses per 100,000	Homicides per 100,000	Self- Inflicted per 100,000
1980	34,980	13	7	4	2	0	0	0	37.2	37.2	20.0	11.4	5.7	0.0
1981	39,903	19	12	4	2	1	0	0	47.6	47.6	30.1	10.0	5.0	2.5
1982	43,061	20	12	5	2	1	0	0	46.4	46.4	27.9	11.6	4.6	2.3
1983	47,092	26	14	2	4	5	1	0	55.2	55.2	29.7	4.2	8.5	10.6
1984	49,133	25	16	5	3	1	0	0	50.9	50.9	32.6	10.2	6.1	2.0
1985	52,603	25	14	6	3	2	0	0	47.5	47.5	26.6	11.4	5.7	3.8
1986	54,464	21	12	3	3	3	0	0	38.6	38.6	22.0	5.5	5.5	5.5
1987	54,958	26	13	6	2	4	1	0	47.3	47.3	23.7	10.9	3.6	7.3
1988	57,007	40	24	8	4	2	1	1	70.2	68.4	42.1	14.0	7.0	3.5
1989	59,518	18	9	5	4	0	0	0	30.2	30.2	15.1	8.4	6.7	0.0
1990	59,907	22	12	6	0	4	0	0	36.7	36.7	20.0	10.0	0.0	6.7
1991	59,391	21	10	4	5	0	2	0	35.4	35.4	16.8	6.7	8.4	0.0
1992	59,305	22	11	7	2	0	2	0	37.1	37.1	18.5	11.8	3.4	0.0
1993	57,601	15	7	3	1	2	2	0	26.0	26.0	12.2	5.2	1.7	3.5
1994	55,825	18	7	6	4	1	0	0	32.2	32.2	12.5	10.7	7.2	1.8
1995	55,830	19	8	4	5	2	0	0	34.0	34.0	14.3	7.2	9.0	3.6
1996	54,692	17	8	4	4	0	1	0	31.1	31.1	14.6	7.3	7.3	0.0
1997	52,578	22	12	4	1	4	1	0	41.8	41.8	22.8	7.6	1.9	7.6
Total		389	208	86	51	32	11	1						

*Prepared by: Washington Headquarters Services
 Directorate for Information
 Operations and Reports
 Updated: March 26, 1998*

TABLE 11C
WORLDWIDE U. S. ACTIVE DUTY MILITARY DEATHS
Comparison of Military Personnel Strength and Manner of Death

FEMALES - AIR FORCE

Fiscal Year	(Sep. 30) End Strength	Total Deaths	Accident	Illness	Homicide	Self- Inflicted	Pending/ Undeter- mined	Hostile Deaths	Deaths per 100,000	Nonhostile Deaths per 100,000	Accidents per 100,000	Illnesses per 100,000	Homicides per 100,000	Self- Inflicted per 100,000
1980	60,394	31	16	3	7	5	0	0	51.3	51.3	26.5	5.0	11.6	8.3
1981	63,478	37	20	7	4	6	0	0	58.3	58.3	31.5	11.0	6.3	9.5
1982	64,448	39	26	6	3	4	0	0	60.5	60.5	40.3	9.3	4.7	6.2
1983	65,865	21	11	5	1	4	0	0	31.9	31.9	16.7	7.6	1.5	6.1
1984	67,116	25	13	3	5	4	0	0	37.2	37.2	19.4	4.5	7.4	6.0
1985	70,061	19	8	5	2	4	0	0	27.1	27.1	11.4	7.1	2.9	5.7
1986	73,604	27	14	7	4	2	0	0	36.7	36.7	19.0	9.5	5.4	2.7
1987	75,881	30	19	9	1	1	0	0	39.5	39.5	25.0	11.9	1.3	1.3
1988	74,448	28	11	3	3	11	0	0	37.6	37.6	14.8	4.0	4.0	14.8
1989	77,103	20	12	6	0	2	0	0	25.9	25.9	15.6	7.8	0.0	2.6
1990	74,134	19	10	4	1	4	0	0	25.6	25.6	13.5	5.4	1.3	5.4
1991	72,436	22	11	4	4	3	0	0	30.4	30.4	15.2	5.5	5.5	4.1
1992	68,789	16	6	3	2	5	0	0	23.3	23.3	8.7	4.4	2.9	7.3
1993	66,732	15	3	6	3	3	0	0	22.5	22.5	4.5	9.0	4.5	4.5
1994	66,314	19	9	4	2	4	0	0	28.7	28.7	13.6	6.0	3.0	6.0
1995	64,147	20	8	3	3	2	2	2	31.2	28.1	12.5	4.7	4.7	3.1
1996	64,814	16	9	3	1	3	0	0	24.7	24.7	13.9	4.6	1.5	4.6
1997	65,835	28	14	7	0	6	1	0	42.5	42.5	21.3	10.6	0.0	9.1
Total		432	220	88	46	73	3	2						

*Prepared by: Washington Headquarters Services
Directorate for Information
Operations and Reports
Updated: March 26, 1998*

TABLE 11D
WORLDWIDE U. S. ACTIVE DUTY MILITARY DEATHS
Comparison of Military Personnel Strength and Manner of Death

FEMALES - MARINE CORPS

Fiscal Year	(Sep. 30) End Strength	Total Deaths	Accident	Illness	Homicide	Self- Inflicted	Pending/ Undeter- mined	Hostile Deaths	Deaths per 100,000	Nonhostile Deaths per 100,000	Accidents per 100,000	Illnesses per 100,000	Homicides per 100,000	Self- Inflicted per 100,000
1980	6,706	4	2	0	1	0	1	0	59.6	59.6	29.8	0.0	14.9	0.0
1981	7,617	5	1	2	0	2	0	0	65.6	65.6	13.1	26.3	0.0	26.3
1982	8,435	3	3	0	0	0	0	0	35.6	35.6	35.6	0.0	0.0	0.0
1983	8,896	6	2	3	1	0	0	0	67.4	67.4	22.5	33.7	11.2	0.0
1984	9,225	10	3	3	2	2	0	0	108.4	108.4	32.5	32.5	21.7	21.7
1985	9,695	4	1	0	3	0	0	0	41.3	41.3	10.3	0.0	30.9	0.0
1986	9,889	2	1	0	0	1	0	0	20.2	20.2	10.1	0.0	0.0	10.1
1987	9,789	4	3	0	1	0	0	0	40.9	40.9	30.6	0.0	10.2	0.0
1988	9,613	3	2	0	0	1	0	0	31.2	31.2	20.8	0.0	0.0	10.4
1989	9,708	4	2	0	1	1	0	0	41.2	41.2	20.6	0.0	10.3	10.3
1990	9,356	4	0	0	1	2	1	0	42.8	42.8	0.0	0.0	10.7	21.4
1991	9,005	3	1	0	2	0	0	0	33.3	33.3	11.1	0.0	22.2	0.0
1992	8,524	7	6	0	1	0	0	0	82.1	82.1	70.4	0.0	11.7	0.0
1993	7,845	1	0	0	0	1	0	0	12.7	12.7	0.0	0.0	0.0	12.7
1994	7,671	2	0	1	1	0	0	0	26.1	26.1	0.0	13.0	13.0	0.0
1995	8,093	4	3	0	0	1	0	0	49.4	49.4	37.1	0.0	0.0	12.4
1996	8,564	3	1	0	0	2	0	0	35.0	35.0	11.7	0.0	0.0	23.4
1997	9,286	5	4	0	0	1	0	0	53.8	53.8	43.1	0.0	0.0	10.8
Total		74	35	9	14	14	2	0						

*Prepared by: Washington Headquarters Services
 Directorate for Information
 Operations and Reports
 Updated: March 26, 1998*

TABLE 12
WORLDWIDE U. S. ACTIVE DUTY MILITARY DEATHS
Resulting from Hostile Action

Fiscal Year	Total				Army				Navy				Air Force				Marine Corps			
	Killed In Action	Died of Wounds	Died While Missing/Captured	Died In Terrorist Action	Killed In Action	Died of Wounds	Died While Missing/Captured	Died In Terrorist Action	Killed In Action	Died of Wounds	Died While Missing/Captured	Died In Terrorist Action	Killed In Action	Died of Wounds	Died While Missing/Captured	Died In Terrorist Action	Killed In Action	Died of Wounds	Died While Missing/Captured	Died In Terrorist Action
1980	1				1															
1981																				
1982																				
1983	5	1							1								4	1		
1984	273	3			16	1			25								232	2		
1985	4		1								1						4			
1986	2												2							
1987	38				1				37											
1988	2	1							2	1										
1989																				
1990	20	3	1		15	3			4								1		1	
1991	144	4			96	2			6				20				22	2		
1992	1				1															
1993				10				8												2
1994				19				19												
1995				6				2								2				2
1996	1			20	1			1								19				
1997																				
Total	491	12	2	55	131	6	0	30	75	1	1	0	22	0	0	21	263	5	1	4

Prepared by: Washington Headquarters Services
 Directorate for Information
 Operations and Reports

TABLE 13
WORLDWIDE U.S. ACTIVE DUTY MILITARY DEATHS
SELECTED MILITARY OPERATIONS

MILITARY OPERATION/INCIDENT	CASUALTY TYPE	ARMY	NAVY	AIR FORCE	MARINE CORPS	TOTAL
IRANIAN HOSTAGE RESCUE MISSION APRIL 25, 1980	NONHOSTILE	0	0	5	3	8
LEBANON PEACEKEEPING, AUGUST 25, 1982 - FEBRUARY 26, 1984 *	HOSTILE	3	19	0	234	256
	NONHOSTILE	5	2	0	2	9
	TOTAL	8	21	0	236	265
URGENT FURY, GRENADA, 1983	HOSTILE	11	4	0	3	18
	NONHOSTILE	1	0	0	0	1
	TOTAL	12	4	0	3	19
JUST CAUSE, PANAMA, 1989	HOSTILE	18	4	0	1	23
PERSIAN GULF WAR, 1990 - 1991						
DESERT SHIELD	NONHOSTILE	21	36	9	18	84
DESERT STORM	HOSTILE	98	6	20	24	148
	NONHOSTILE	105	14	6	26	151
	TOTAL	203	20	26	50	299
DESERT SHIELD/STORM	TOTAL	224	56	35	68	383
RESTORE HOPE/UNOSOM, SOMALIA, 1992 - 1994	HOSTILE	27	0	0	2	29
	NONHOSTILE	4	0	8	2	14
	TOTAL	31	0	8	4	43
UPHOLD DEMOCRACY, HAITI, 1994 - 1996	NONHOSTILE	3	0	0	1	4
* PLACE OF CASUALTY, LEBANON						

Prepared by: Washington Headquarters Services
Directorate for Information
Operations and Reports

GLOSSARY OF TERMS

Active Duty. Full-time duty in active Military Service, regardless of duration or purpose. The term includes active duty for training.

Active Duty for Training. A tour of active duty that is used for training members of the reserve components to provide trained units and qualified persons to fill the needs of the Military Services in time of war or national emergency, and such other times as national security requires. The tour of duty is under orders that provide for return to inactive duty status when the period of active duty for training is completed. It includes annual training, special tours of active duty for training, school tours, and the initial tour performed by nonprior Service enlistees.

Captured or Interned. Active duty military personnel who have been detained as the result of action of an unfriendly military or paramilitary force in a foreign country.

Casualty. Any person who is lost to the organization by reasons of having been declared dead, missing, captured, interned, wounded, injured, or seriously ill.

Died. Active duty military personnel lost to their organization by reason of having been declared dead.

Hostile, Hostile Conditions, or Hostile Actions. Meets the requirements of a battle casualty. A battle casualty is any casualty incurred in action. "In action" characterizes the casualty status as having been the direct result of hostile action; sustained in combat or relating thereto; or sustained going to or returning from a combat mission, provided that the occurrence was directly related to hostile action. Included are persons killed or wounded mistakenly or accidentally by friendly fire directed at a hostile force or what is thought to be a hostile force. However, injuries due to the elements or self-inflicted wounds and, except in unusual cases, wounds or deaths inflicted by a friendly force while the individual is in an absent-without-leave or dropped from the rolls status, or who is voluntarily absent from a place of duty, are not to be considered as sustained in action and are, thereby, not to be interpreted as battle casualties.

Missing. Active duty military personnel who are not present at their duty station due to apparent involuntary reasons and whose location is not known. Excluded are personnel who are in an absent-without-leave or deserter status, or those who have been dropped from the rolls of their Military Service.

Pending or Undetermined. Both terms apply to nonhostile casualties. The term "Pending" or "Determination Pending" is used whenever an initial or interim report is issued while awaiting the results of an investigation, toxicological examination, or autopsy, such as, in an apparent self-inflicted death. "Pending" represents a transitory classification. The term "Undetermined" is used whenever the cause and circumstance surrounding a deceased, nonhostile casualty can not be determined. "Undetermined" is considered a final classification describing the manner of death.

Returned to Military Control (RMC). Active duty military personnel previously missing, captured, or interned who have been returned to U.S. military authority.